



## Advantage® Graphene for Metal Roofs



For application onto metal roofs and areas of cut edge corrosion. A single component metal roof coating with exceptional corrosion resistance that can be applied to a damp substrate in one coat. Solvent free hybrid coating with corrosion inhibiting Graphene.

### Roof Preparation

Before starting any work, ensure the substrate is structurally sound and stable.

**Roof Inspection:** Remove all loose matter such as moss, lichen or other debris. Look for any loose and flaking coatings and remove as required.

### Roof Cleaning

Clean the roof with a minimum 3000 psi pressure washer and remove all dirt and debris to ST2 standard, you will find this more effective with a rotary cleaning head. Remove stubborn dirt and flaking corrosion using hand tools as required.

After cleaning, inspect the roof for any remaining contaminants. Bear in mind that any contaminants can affect the long term adhesion of the coatings, so must be dealt with before proceeding.

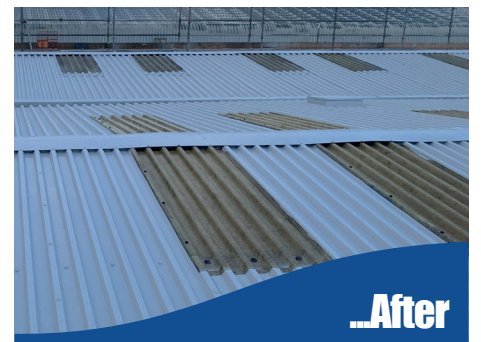
### Roof Repair

Once the roof is completely clean inspect the surface for holes, cracks and damaged areas. Make all repairs necessary to the roof surface using the Advantage® Sealant and Speed Patches if required. Check fixings carefully for holes and rust.

### Priming

After preparation work is complete apply one coat of Advantage® Graphene enhanced Metal Primer to all areas of surface rust, cut sheet edges and overlaps to a minimum of 25mm past any corrosion or peeled paint, ensuring the underside is coated where possible. Allow 2-4 hours to cure until completely dry (dependent on time of year). Lead surfaces should always be primed.

Remove all sheet fixing caps if possible and apply Advantage® Metal Primer all over the fixings. If cappings are tight and there is no rust stain leaching out, prime the caps to aid adhesion of the coating. Allow 2-4 hours to cure.



**WARNING**  
Ensure Metal Primer is completely dry before applying the top coat.

## Edge & Lap Preparation

Clean and prepare all cut edges and laps to standard, see cut-edge corrosion guide.

If moisture is present under laps, dry or blow dry using preferred method first and apply Advantage® Sealant at least 5mm into the lap and over the top. making sure to seal over and around the corroded edge. Tool smooth with the Advantage® Graphene for Metal Roofs wet on wet to obtain a smooth fillet to a minimum distance of 25mm beyond the last firm edge point. Ensure the profile of the edge is not visible through the treatment.

Apply Advantage® PLUS over and around all the fixings.

## Application

Once the above is completed. Apply Advantage® Graphene for Metal Roofs by preferred method, to a DFT of 200 microns minimum.

## Application Rate

When measuring please make sure that roof profiles are considered and added to the surface area accordingly. Thorough preparation at this stage will ensure correct primer and coating coverage.

The Advantage® Graphene for Metal roofing has a theoretical coverage rate of 5 square meters per litre.

As a guide, chalk areas on the roof corresponding to tins, so you can check the right coverage is being applied throughout application.

When applying the coating the use of a wet film gauge is advised.

Remember a low dry film thickness will invalidate your warranty.

## Coverage Guide

- Advantage® Metal Primer: 4-5 sqm per Litre.
- Advantage® Graphene for Metal Roofs: Theoretical 5 sqm per Litre.
- **Mixing:** Mix the solution in the tin using a lowspeed (300 rpm) mixer.
- **Spraying the Coating:** The coating can be sprayed. Added solvent is not usually required. When spraying we advise a loss contingency margin of 30%.

*No responsibility can be taken by the manufacturers where conditions of use are beyond our control. All products should be used in accordance with the manufacturer's instructions. For further information please refer to the application guide and Material Safety Data Sheet. This information and guidance is given in good faith and without prejudice and liability, Technical and Safety Data must be observed. All coverages are given as a guide only, as volumes will vary with profile, porosity and method of application. Loss factors should also be taken into account.*

## Technical Data

<b>Form:</b>	Viscous coloured liquid
<b>Coverage:</b>	Theoretical 5m <sup>2</sup> per 1L (depending on substrate)
<b>Pack Size:</b>	5 & 15 Litres
<b>Shelf Life:</b>	12 months
<b>Temp. Limits:</b>	3°C - 60°C

## Components

- Advantage® Graphene Enhanced Anti Corrosion Metal Primer: 2.5L Tins
- Advantage® for Metal Roofs: 5L & 15L Tins
- Advantage® PLUS: 5L Tins
- Advantage® Sealant: 310ml Tube

# ALLTIMES COATINGS

Alltimes Coatings, Units C & D,  
Station Road Industrial Estate,  
South Woodchester, Stroud,  
Gloucestershire. GL5 5EQ. UK

T: 01453 872 850

E: [info@alltimescoatings.co.uk](mailto:info@alltimescoatings.co.uk)

W: [www.alltimescoatings.co.uk](http://www.alltimescoatings.co.uk)