



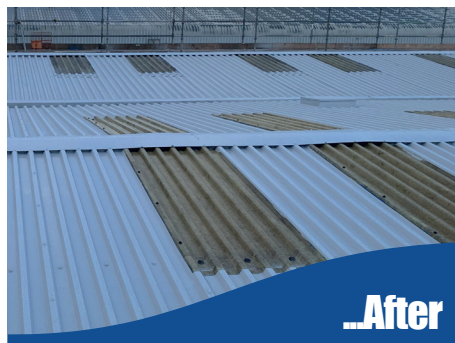
## Preparation and Cleaning

- Power-wash using 3,000 psi. water pressure minimum or clean surface thoroughly to ST2 standard, you will find this more efficient with a rotary cleaning head. All oil, grease and dirt must be removed prior to application.
- Some previous coatings must be removed, contact our technical department to discuss.
- Observe standard decorative practice. Passivate (T-wash) new bare galvanised substrates.

## Application

- Brush or roller apply one coat of Advantage® Metal Primer to all areas of surface rust, cut sheet edges and overlaps, ensuring the underside is coated.
- Remove all sheet fixing caps if possible and apply Advantage® Metal Primer. Prime remaining caps.
- Apply Advantage® PLUS for Metal Roofs over and around any fixings primed for corrosion if required.
- Treat all overlaps and sheet ends as per the Cut Edge Corrosion Application guide.
- Apply one coat of Advantage® Graphene for Metal Top Coat by spray, brush or roller to a dry film thickness of 200 microns.

**Ensure Metal Primer is completely dry before applying the top coat.**



## Technical Data

<b>Form:</b>	Viscous coloured liquid
<b>Coverage:</b>	Theoretical 5m <sup>2</sup> per 1L (depending on substrate)
<b>Pack Size:</b>	5 & 15 Litres
<b>Shelf Life:</b>	12 months
<b>Temp. Limits:</b>	3°C - 60°C

## Components

- Advantage® Graphene Enhanced Anti Corrosion Metal Primer: 1L & 2.5L Tins
- Advantage® Sealant: 310ml Tube
- Advantage® for Metal Roofs: 5L & 15L Tins
- Advantage® PLUS: 5L Tins

*No responsibility can be taken by the manufacturers where conditions of use are beyond our control. All products should be used in accordance with the manufacturer's instructions. For further information please refer to the application guide and Material Safety Data Sheet. This information and guidance is given in good faith and without prejudice and liability, Technical and Safety Data must be observed. All coverages are given as a guide only, as volumes will vary with profile, porosity and method of application. Loss factors should also be taken into account.*